



**Vacant
Terminal 1, Concourse B
(T1B.U.75.F)**

Chicago O'Hare International Airport
Mayor Lori Lightfoot

Chicago Department of Aviation
Commissioner Jamie Rhee



Unison Retail Management

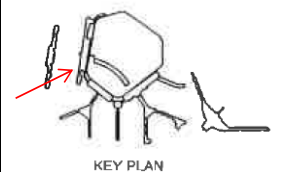


Terminal 1 / Concourse B, Upper Level

Vacant, 75.F, B6

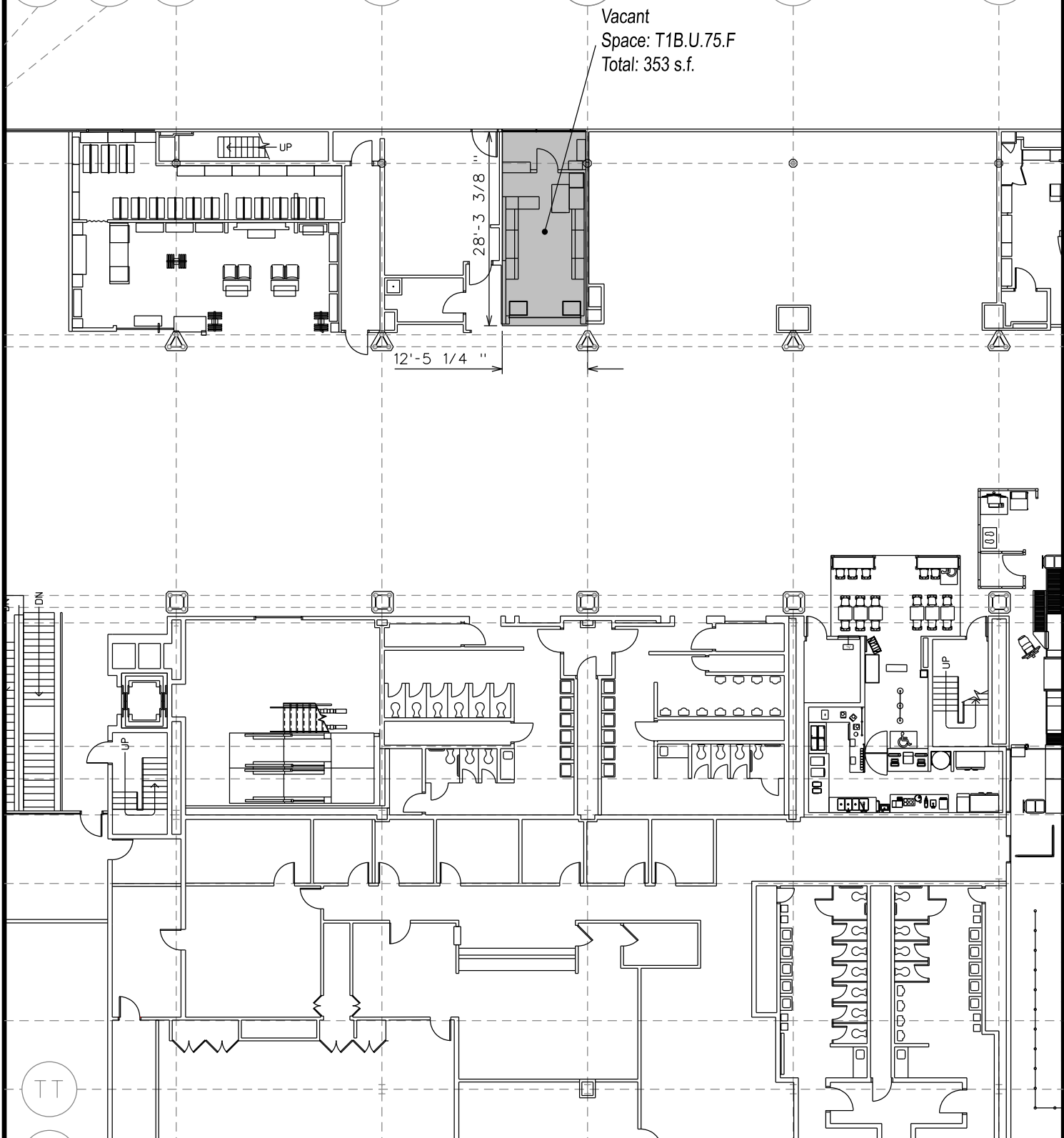
STOREFRONT PHOTO

Updated: 07/30/2020



KEY PLAN

73A 73B 74 75 76 77 78

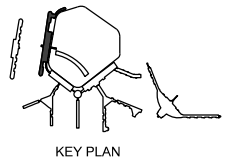


Chicago O'Hare International Airport
 Mayor • Lori Lightfoot

Terminal 1/ Concourse B Upper Level

Chicago Department of Aviation
 Commissioner • Jamie Rhee

Vacant (T1B.U.75.F)
 Scale: 1"= 20'- 0"



KEY PLAN

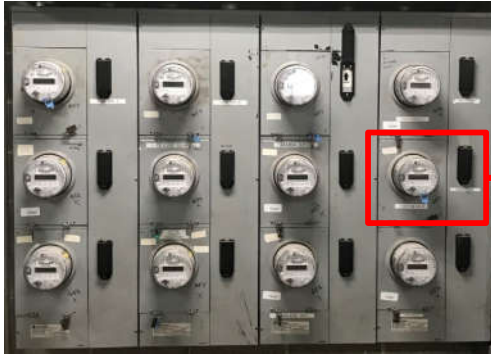
Date: July, 2020



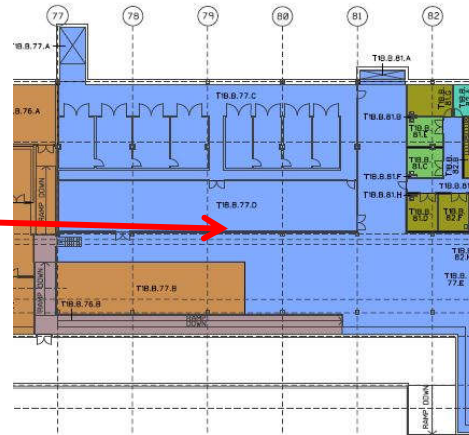
**TERMINAL 1 CONCOURSE B
ELECTRICAL METER**



BREAKER



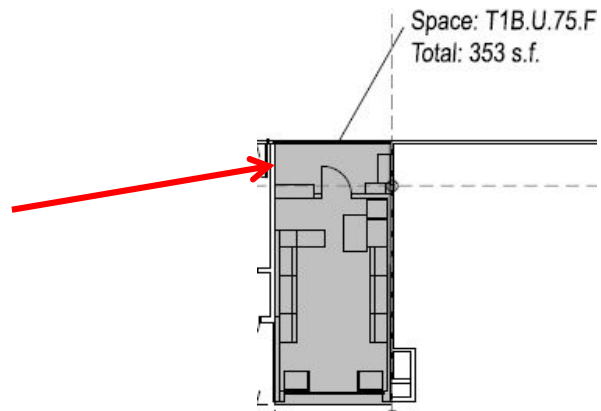
**ELECTRICAL METER PANEL -
TERMINAL CONCOURSE B
BASEMENT LEVEL**



**ELECTRICAL METER PANEL LOCATION
TERMINAL 1 CONCOURSE B
BASEMENT LEVEL**



**B.O.H. ELECTRICAL PANEL
UPPER LEVEL**



**ELECTICAL PANEL PLAN
UPPER LEVEL**

Chicago O'Hare International Airport
Mayor Lori Lightfoot

Chicago Department of Aviation
Commissioner Jamie Rhee



Unison Retail Management

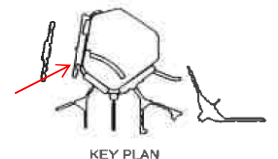


Terminal 1 / Concourse B, Upper Level

Vacant, 75.F, B6

ELECT. METER & PANEL LOCATION

NTS
Updated: 07/30/2020



KEY PLAN

No Water Service

Chicago O'Hare International Airport
Mayor Lori Lightfoot

Chicago Department of Aviation
Commissioner Jamie Rhee



Unison Retail Management

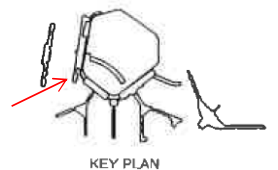


Terminal 1 / Concourse B, Upper Level

Vacant, 75.F, B6

WATER METER LOCATION

NTS
Updated: 07/30/2020



No Gas Service

Chicago O'Hare International Airport
Mayor Lori Lightfoot

Chicago Department of Aviation
Commissioner Jamie Rhee



Unison Retail Management

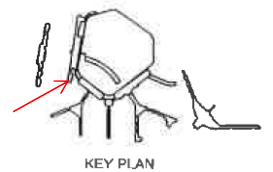


Terminal 1 / Concourse B, Upper Level

Vacant, 75.F, B6

GAS METER LOCATION

NTS
Updated: 07/30/2020



KEY PLAN